

# Integrating Microsoft Project with the Enterprise

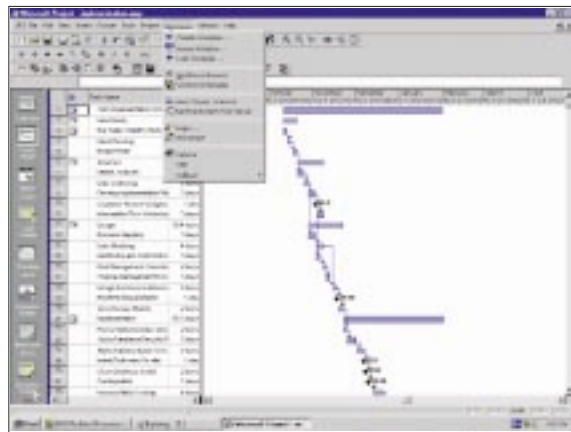
## Capabilities Overview

**AMS REALTIME** provides seamless integration with Microsoft Project, bringing real time enterprise visibility to all project work. Together AMS REALTIME and Microsoft Project provide a solution for managing projects and resources which addresses the needs of everyone in the organization.

**AMS REALTIME** extends and enhances Microsoft Project by providing:

- a. A central repository for project plans with role-based security.
- b. Central resource definitions and availability information, shared by all Microsoft Project users.
- c. Project portfolio and program management capabilities.
- d. High-level decision support and reporting for staff and executives at all levels in the organization.
- e. Integrated timesheets, either stand alone or using a web browser, to automatically update the status of plans. Individuals receive one timesheet to book time across multiple Microsoft Project plans, as well as on non-project work. Sophisticated features for time booking are provided, including 'estimates-to-complete', annotation, expenses, graphical calendars and personal task displays, as well as approval mechanisms for managers.
- f. Seamless importing of timesheet data into Microsoft Project plans, and the information can be accepted, or rejected if it is incorrect.
- g. Resource management capabilities, including resource requesting and allocation to support organizations with a matrix structure.
- h. Resource capacity planning and skills modeling across the enterprise.
- i. Support for Earned Value Management, including C/SCSC.
- j. Integration with leading ERP systems such as Oracle Applications.

This functionality is provided to Microsoft Project users simply via an additional menu within the Microsoft Project product so that users do not need to learn a new tool to integrate their data with the enterprise system.



*Microsoft Project Users are seamlessly integrated with the enterprise project and resource management system simply via an additional menu.*

## Supported Platforms

The solution supports both Microsoft Project 98 and Microsoft Project 2000 and is available on Microsoft Windows 95, 98, NT and 2000 desktops as well as Windows NT and Windows 2000 Servers. Data can be stored in Oracle, Microsoft SQL Server as well as other SQL databases. **AMS REALTIME** is ODBC compliant and Microsoft Office is often used in conjunction with AMS REALTIME to provide data analysis and reporting as well as other capabilities.

Users can also access **AMS REALTIME** via the web for time booking, reporting and publishing, project collaboration and data administration.

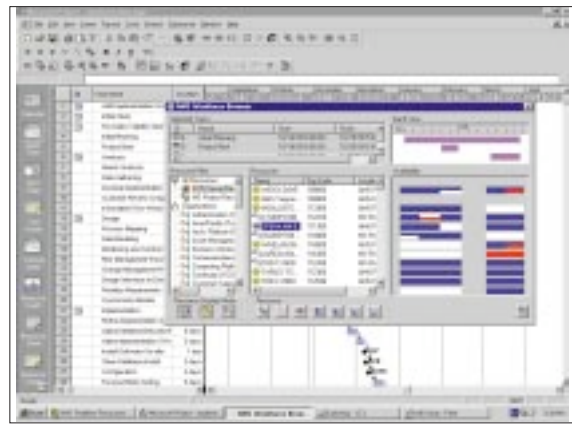
## Centralized Resource Management

One of the toughest challenges organizations using Microsoft Project face is to get an accurate picture of where resources are being used and what is the capacity to take on new work. **AMS REALTIME** address this with the unique Work force Browser™ which enables Microsoft Project users to query and select resources from a centrally maintained database. The Work force Browser allows a consistent set of resource definitions to be used on all projects and also provides flexibility to support different approaches to managing resources, such as matrix management, dedicated project teams, or a mixture of approaches.

### Typical scenario

There are many ways in which Microsoft Project users can integrate their data with **AMS REALTIME** as part of an enterprise solution. Here is just one scenario:

1. A Microsoft Project user creates or modifies a project plan, or loads it from the central repository.
2. Next the Microsoft Project user adds resources to the plan from the central repository, taking into account skills and other commitments. Alternatively, Microsoft Project users can request generic skills and subsequently have a resource manager allocate individuals to satisfy those skills requirements, based on project priorities and other commitments.
3. When the plan is complete, the Microsoft Project user can commit the plan to the central repository. This information will appear on individual's timesheets and personal work plans.
4. Timesheet users record their effort on all the tasks on their timesheet, including providing 'estimates-to-complete' for unfinished tasks.
5. Next, the timesheet data is reviewed and approved by managers.
6. Microsoft Project users then import progress information back into their project plans and see the impact of the work performed to date.



The unique **AMS REALTIME** Workforce Browser gives Microsoft Project users direct access to the company resource directory, ensuring consistent definitions and enterprise-wide visibility of capacity.

This simple scenario shows just one example of how Microsoft Project can be integrated with a centralized timesheet and resource management system using the capabilities of **AMS REALTIME**.

### Who will benefit from the AMS REALTIME-Microsoft Project solution?

The **AMS REALTIME** - Microsoft Project solution is designed to meet the needs of IS departments, professional services organizations and businesses managing portfolios of projects for new product introduction such as pharmaceuticals and electronics. Any organization managing multiple projects using Microsoft Project will benefit from the solution, particularly as **AMS REALTIME** provides capabilities to meet the needs of staff and managers throughout the organization.

### Global, enterprise implementations

Advanced Management Solutions can support enterprise customer implementations on a global level or local level through its offices in the US and UK and a network of partners around the world. We recognise the importance of consulting services in delivering a solution for enterprise project management.

### Contact information Advanced Management Solutions

#### USA

Tel: +1 909 793 0111

Fax: +1 909 793 7405

Toll Free 800 397 6829

#### UK

Tel: +44 (0)118 9605 800

Fax: +44 (0)118 9605 801

Visit our web site at

<http://www.amsrealtime.com>